

CS183: Tutorial for iUMLite - Creation of Use Case Diagrams

This tutorial has been designed specifically for providing instructions of how to draw use case diagrams..

IMPORTANT NOTE

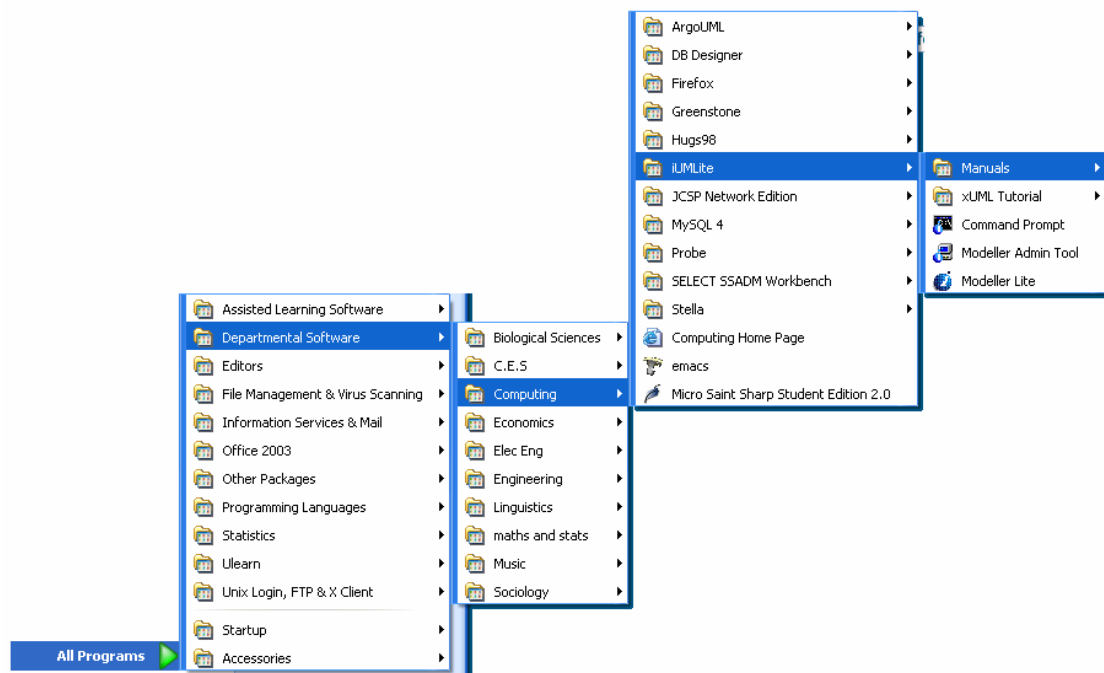
Limitations of iUMLite (Evaluation Version) for constructing a Use Case Diagram

- Only five (5) use case
- Only five (5) actors

Useful Links: <http://www.kc.com>

You can download an evaluation version of the software from here, including manuals.

*On the lab machines,
the iUMLite tutorial is available in:*

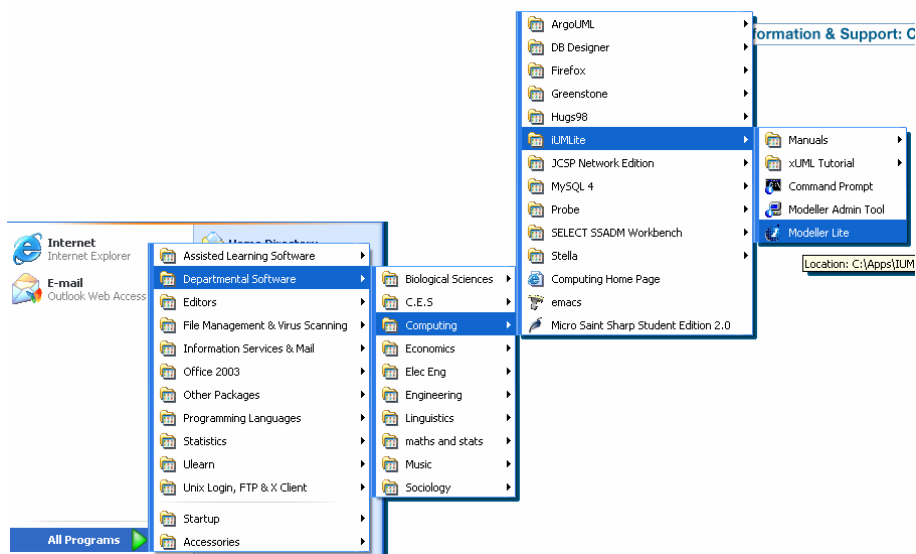


INSTRUCTIONS FOR USING iUMLite

Create a new folder in your home directory (H:) and name it **Lab_1_Use_Case**

From the **Start Menu** *select*:

- **All Programs**
 - **Departmental Software**
 - **Computing**
 - **iUMLite**
 - **Modeller Lite**

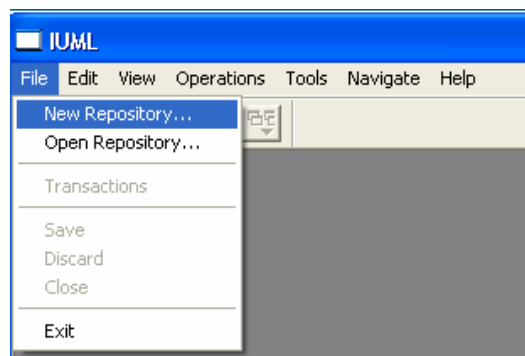


1. Create an iUMLite Database

iUMLite saves the information you enter in a database. This database is a set of folders and files that are stored in the directory you specify. To do this:

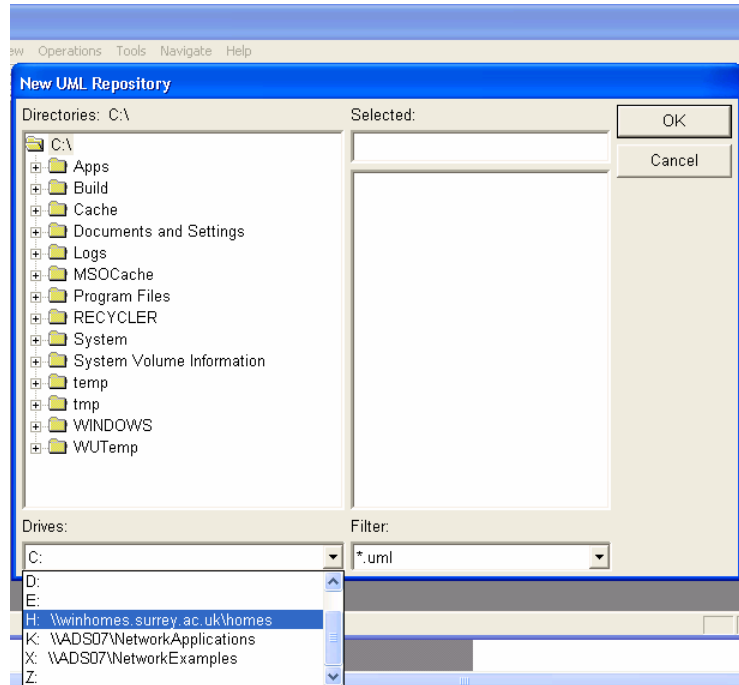
- a. Select **File - New Repository...** (Screenshot 1)

Screenshot 1



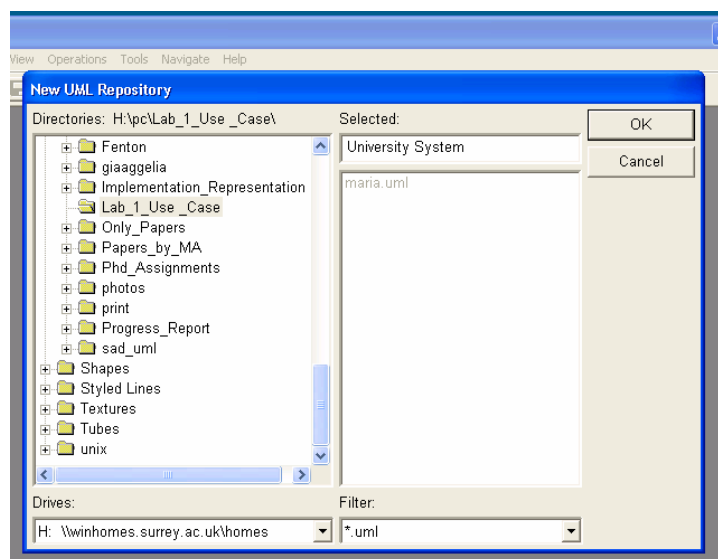
- b. Navigate to the area you wish to save the database. (*I suggest to use the new folder you created in your home directory*). (Screenshot 2)

Screenshot 2



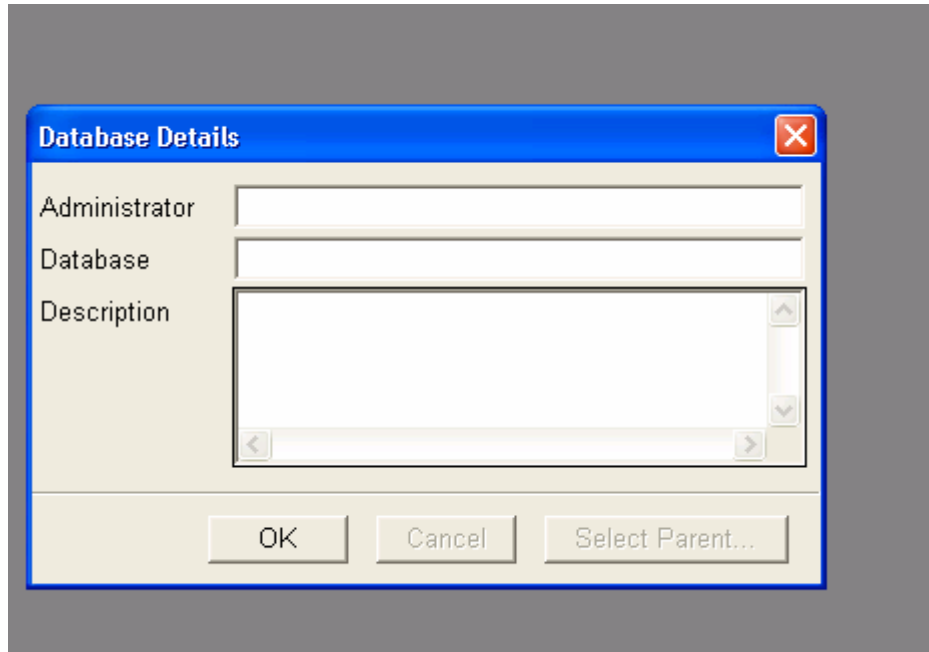
- c. Enter a name for the database, for example, **University System** and click **OK**. (Screenshot 3)

Screenshot 3



- d. Enter the following fields (for example, your name, in the administrator field, and type the word **unis** in the database field) in your database and click **OK**. (Screenshot 4)

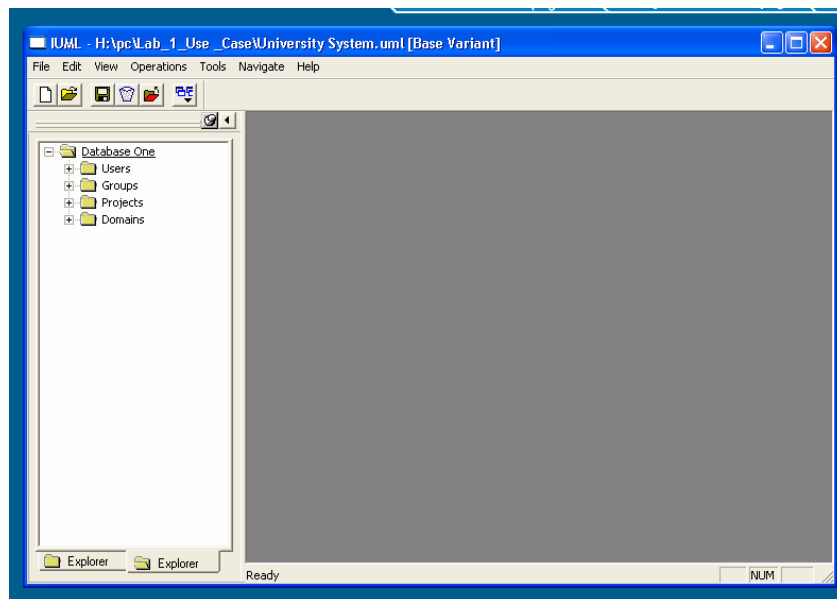
Screenshot 4



You have now created a database in your home directory.

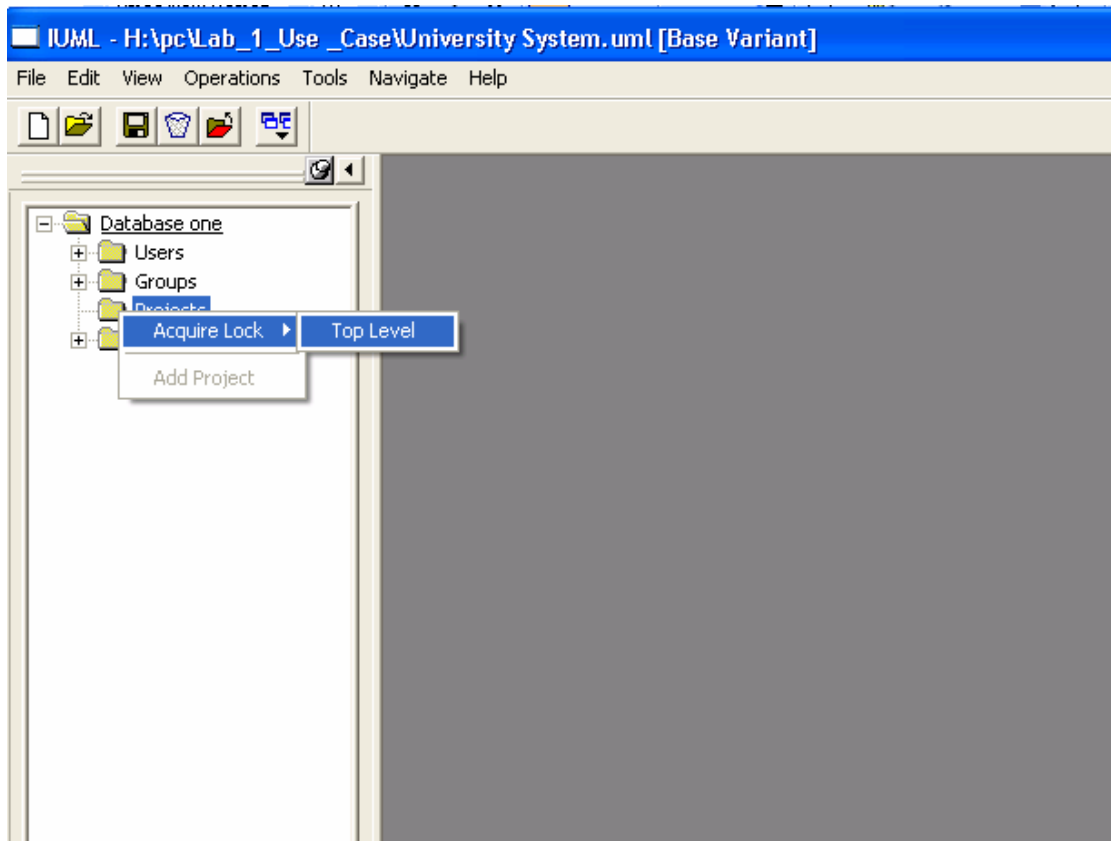
- e. The following window will appear (Screenshot 5)

Screenshot 5

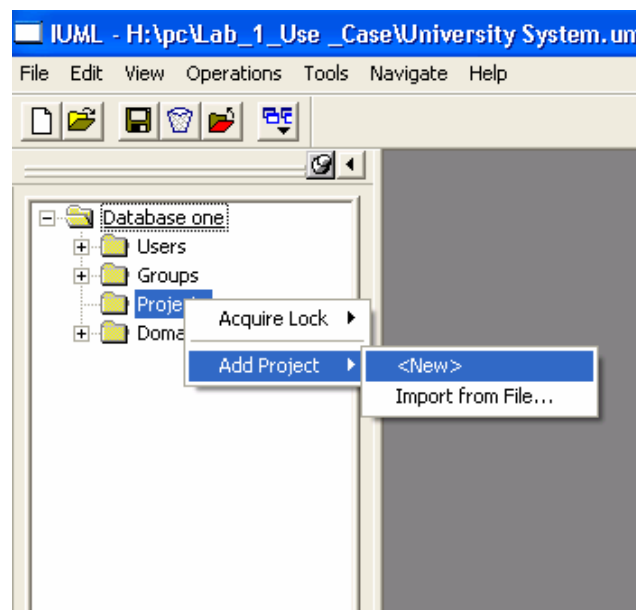


2. Create a Project

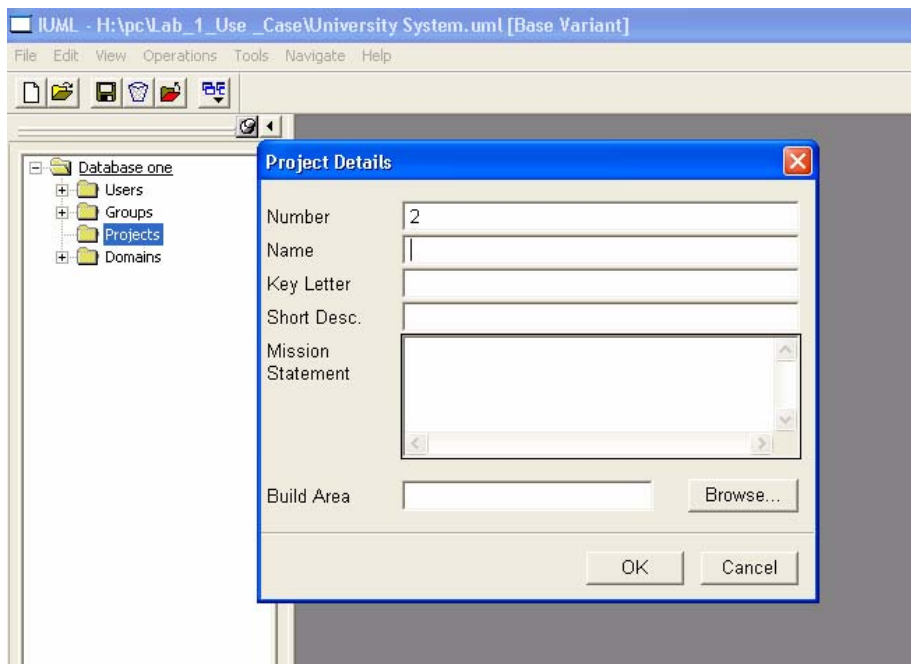
- Right click on **Projects** → **Acquire Lock** → **Top Level**



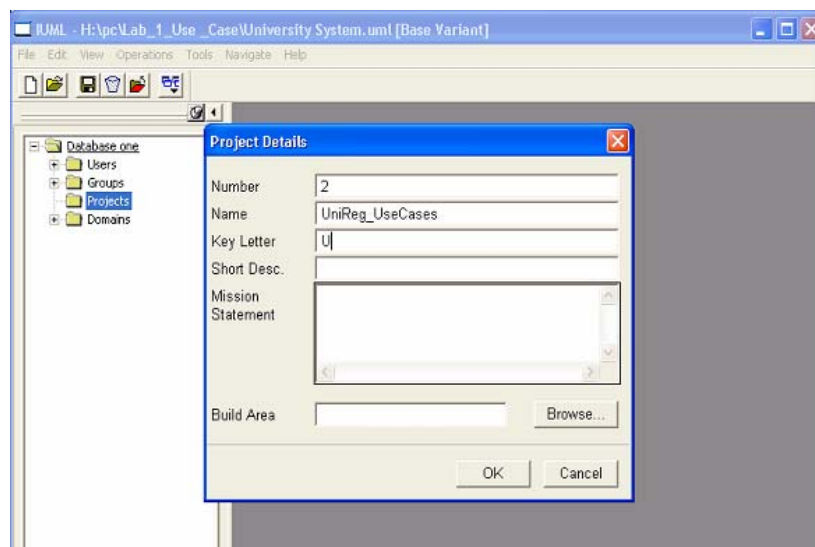
- Right click on **Projects** → **Add Project** → **Select <New>**



- The following window will appear



- Fill in the details of the project and click **OK**.
- Enter **UniReg_UseCases** in the **Name** field, and enter any letter in the **Key Letter** field.

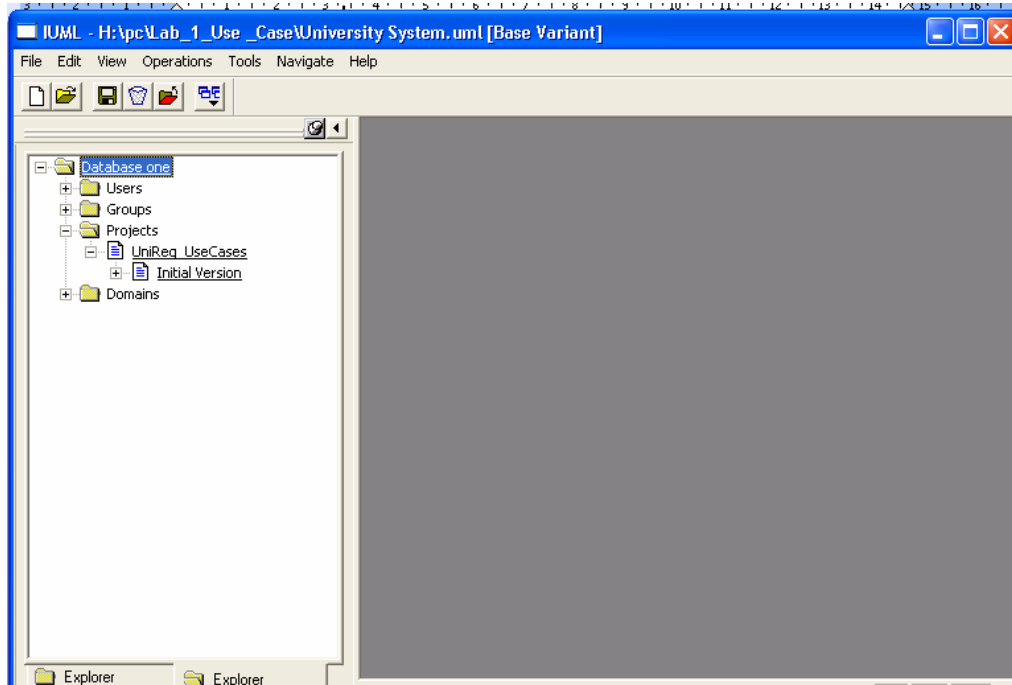


Leave the **Build Area** field blank for now.

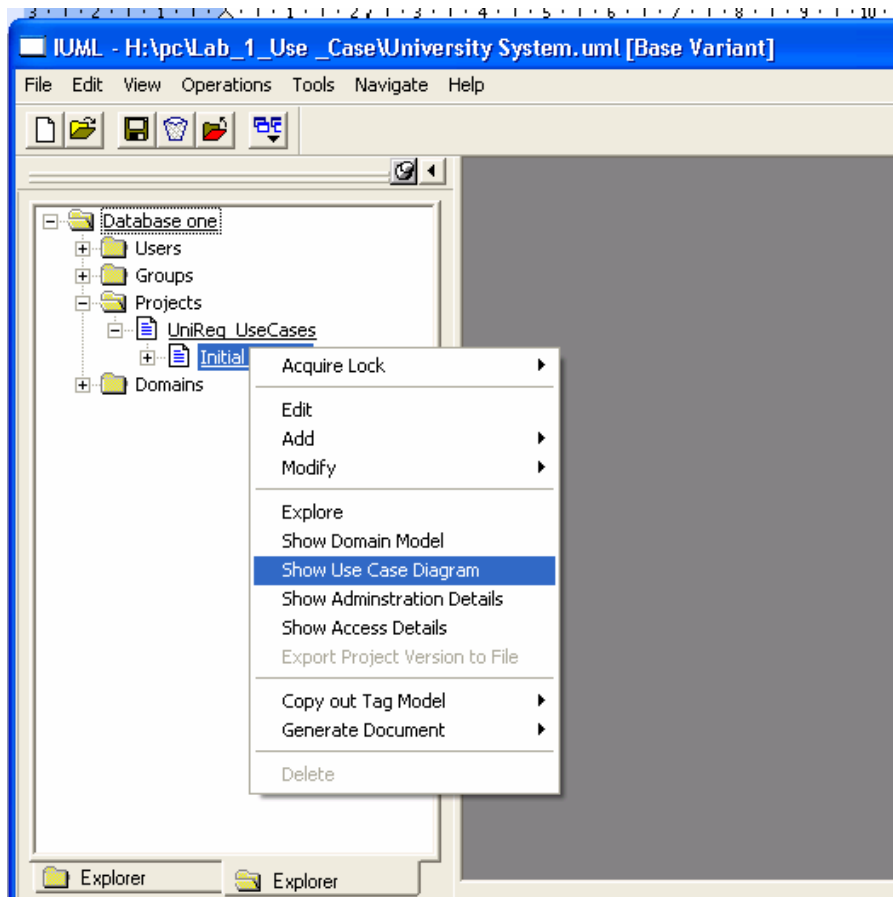
So far you've learned how to **create a project** using iUMLite. Next you will learn how to create a use case diagram.

3. Create a Use Case Diagram

Expand the tree to **Projects** → **UniReg_UseCases** → **Initial Version**

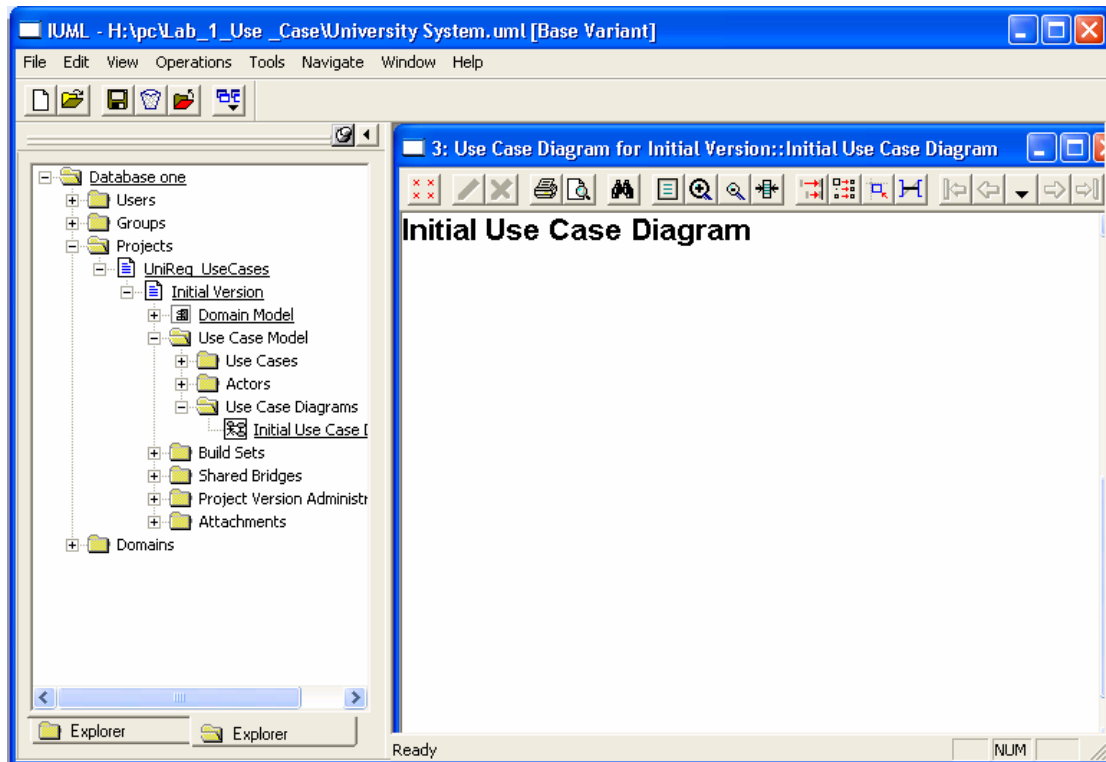


Right click on the **Initial Version** and select **Show Use Case Diagram**.



Expand the tree to **Initial Version** → **Use Case Model** → **Use Case Diagram** → **Initial Use Case Diagram**.

Left click on **Initial Use Case Diagram**.

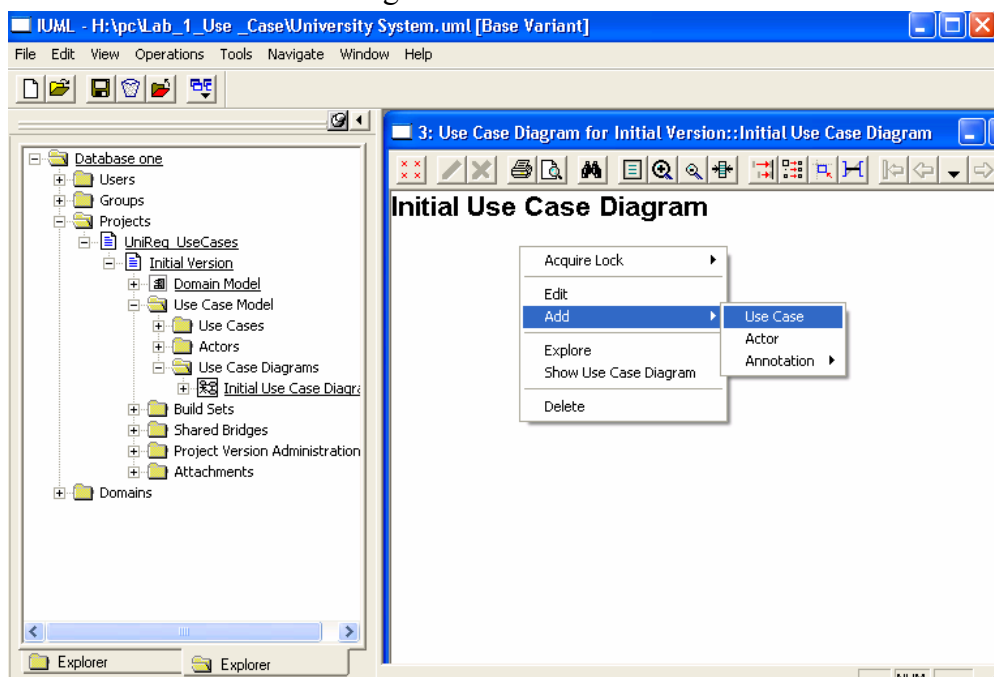


Right Click on the canvas (right hand window) to add *Use Case*, *Actor*, *Annotation* or *Communication*.

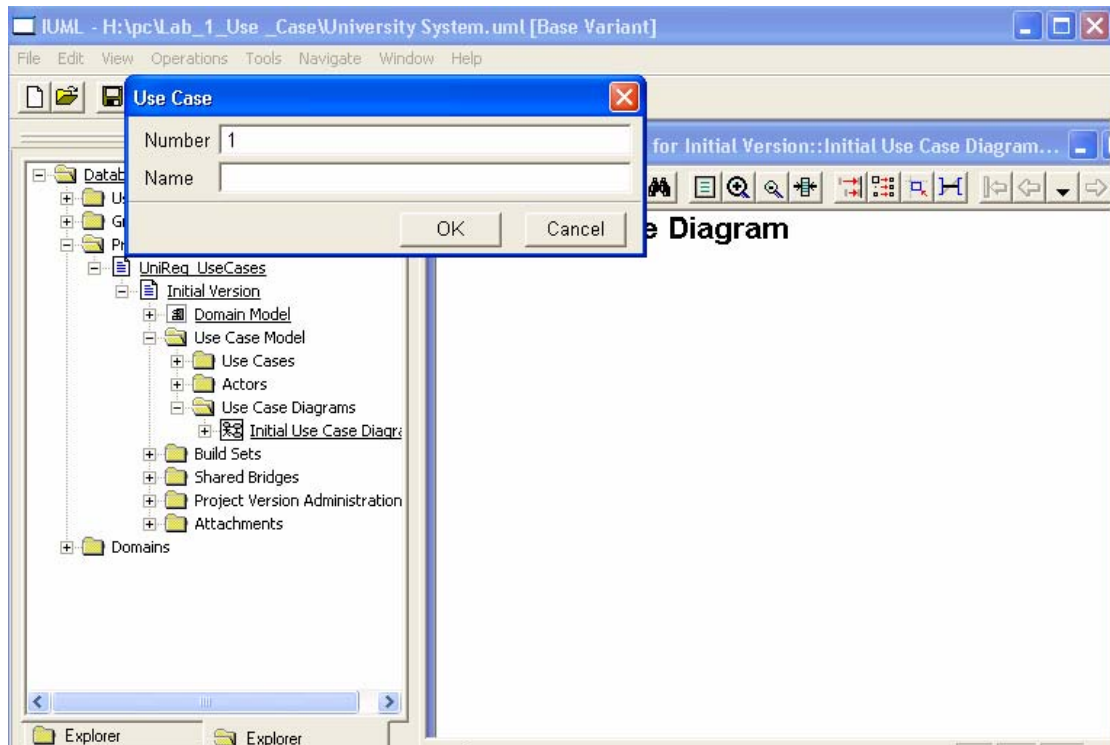
An example of adding a Use Case:

Right click on the canvas → **Add** → **Use Case**.

This can be seen in the following screenshot



The following screenshot will appear.



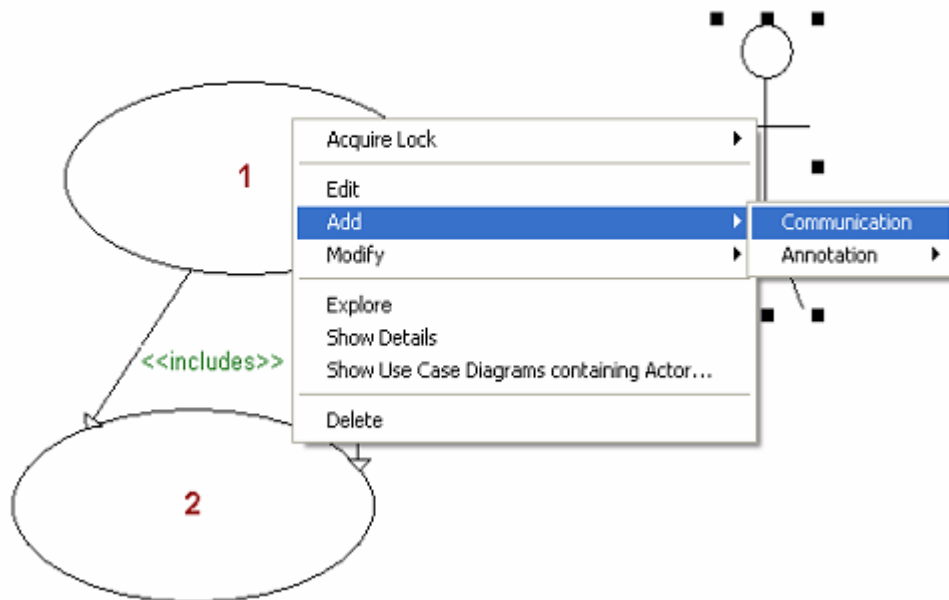
Give any name you like in the **name** field and select **OK**.

You can add an **Actor** in a similar way.

An example of adding a communication link

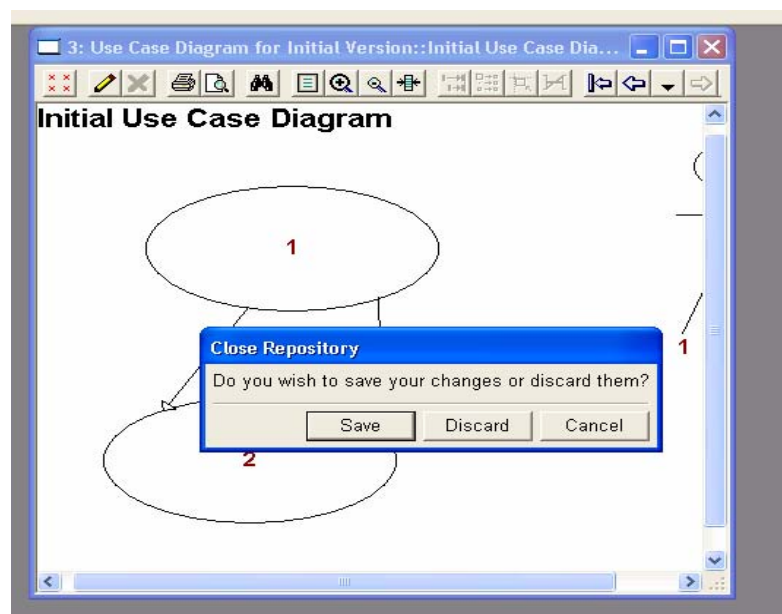
A communication link is used to show a link between a use case and an actor. So, to do this, select a use case or an actor → **right click on it** → **Add** → **Communication**

Initial Use Case Diagram

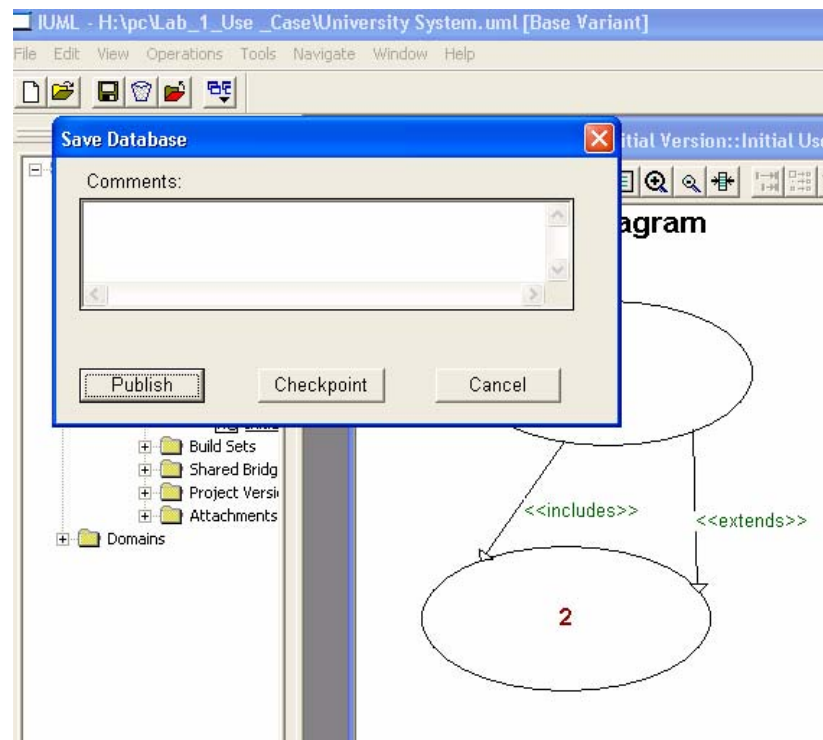


4. Save your work

From the main menu select **File** → **Exit**. The following window will appear.



Select **save**. The following window will appear.



You can enter a comment and click **Publish**

In the next window that appears, confirm your exit from iUMLite by clicking **OK**.