

Tutorial for iUMLite - Creation of Class Diagrams

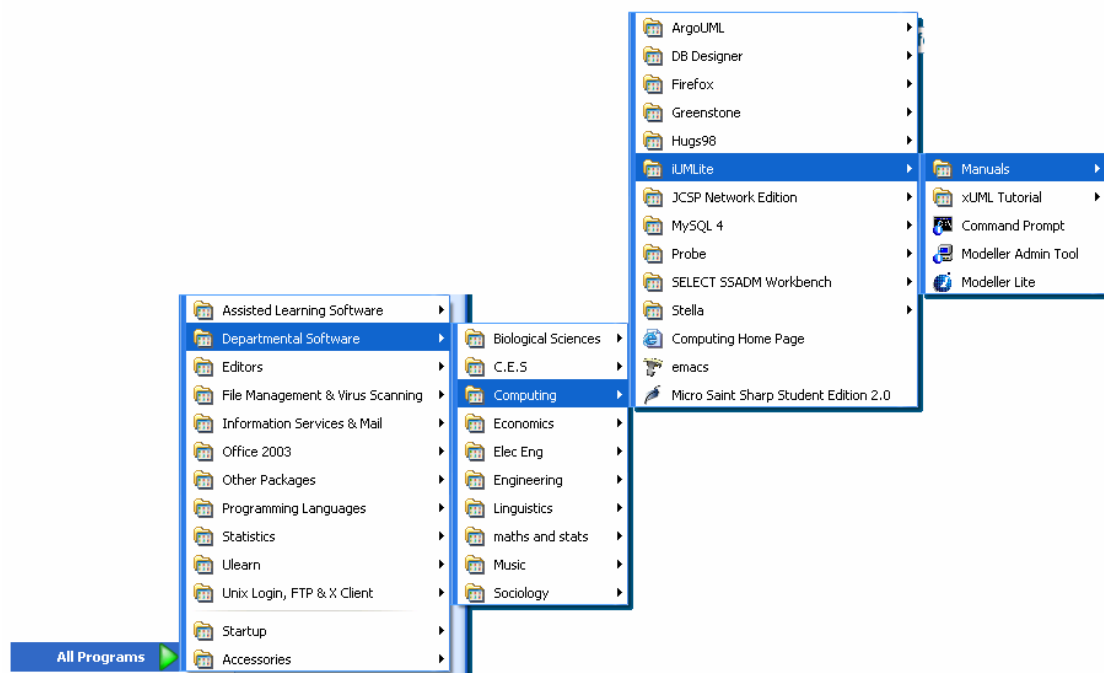
IMPORTANT NOTE

Limitations of iUMLite (Evaluation Version) for constructing a Class Diagram
- 15 classes per domain

Useful Links: <http://www.kc.com>

You can download an evaluation version of the software from here, including manuals.

*On the lab machines,
the iUMLite tutorial is available in:*

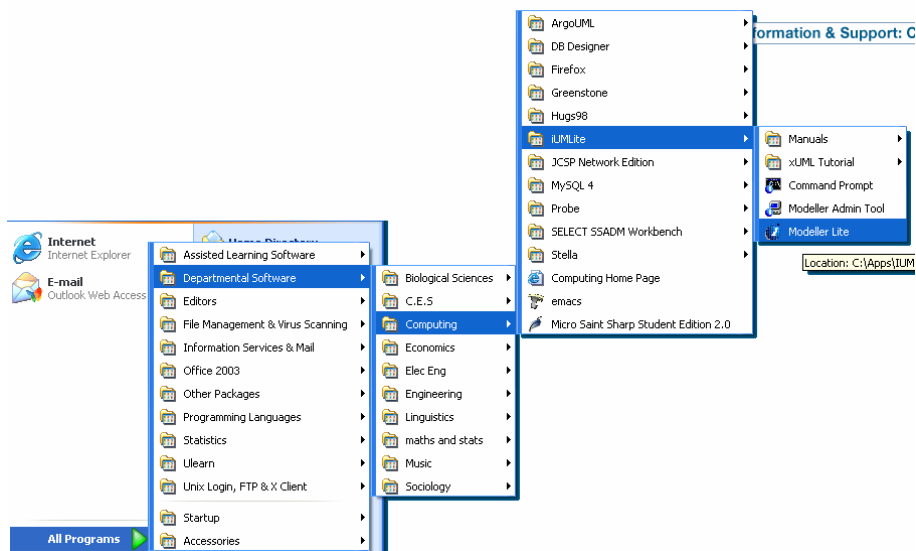


INSTRUCTIONS FOR USING iUMLite

Create a new folder in your home directory (H:) and name it **Lab_2_Class_Diagram**

From the **Start Menu** *select*:

- **All Programs**
 - **Departmental Software**
 - **Computing**
 - **iUMLite**
 - **Modeller Lite**

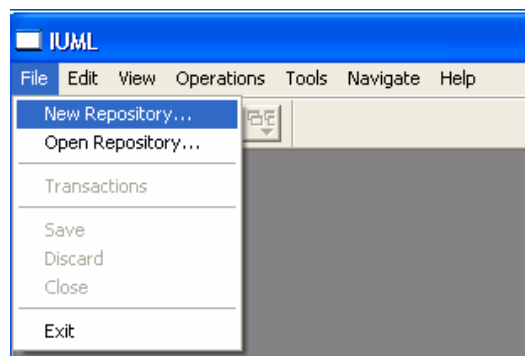


1. Create an iUMLite Database

iUMLite saves the information you enter in a database. This database is a set of folders and files that are stored in the directory you specify. To do this:

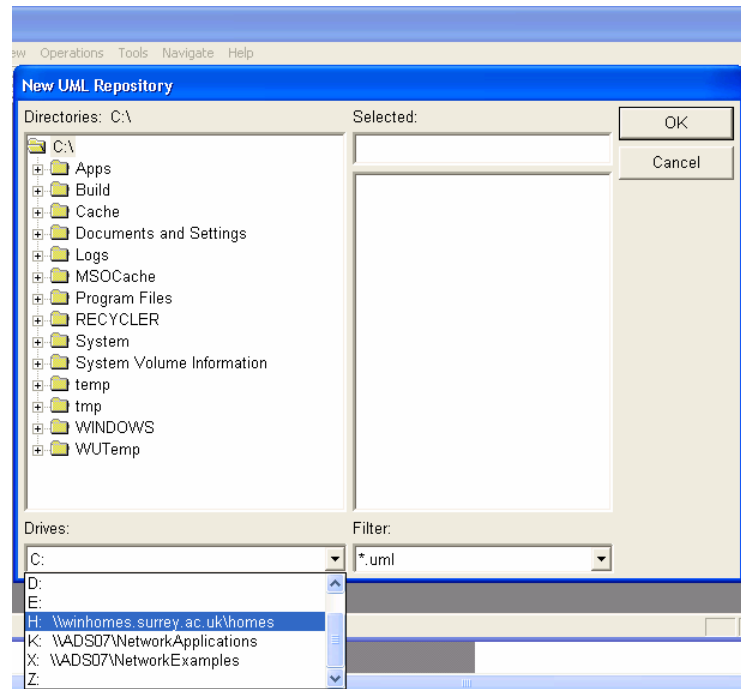
- a. Select **File - New Repository...** (Screenshot 1)

Screenshot 1



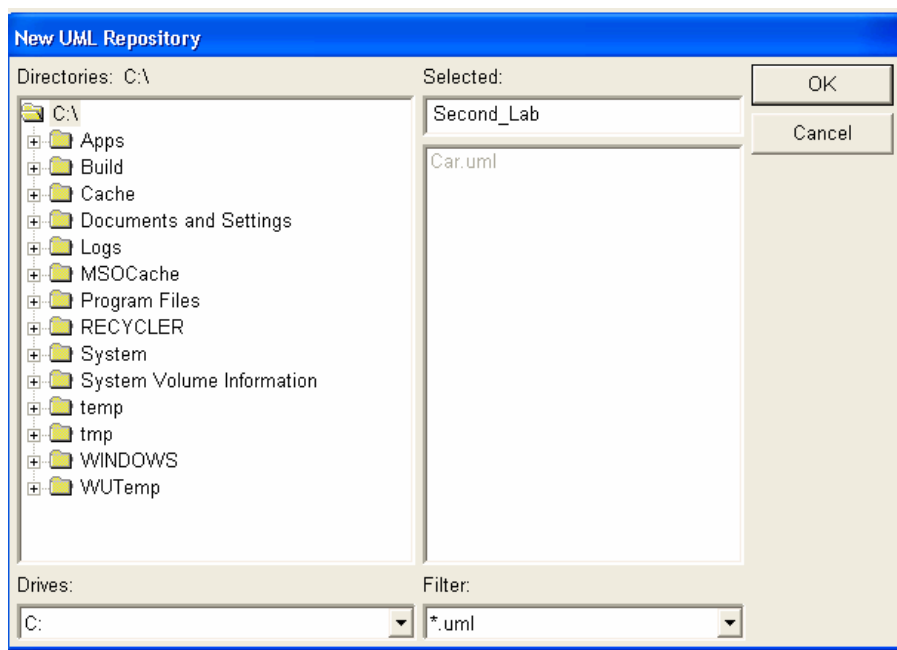
- b. Navigate to the area you wish to save the database. (*I suggest to use the new folder you created in your home directory*). (Screenshot 2)

Screenshot 2



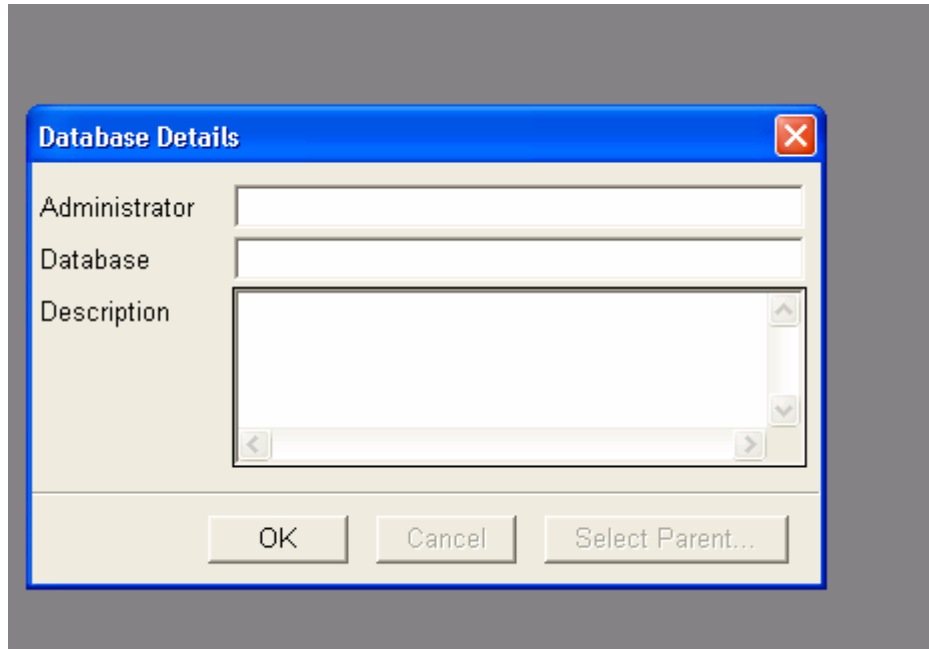
- c. Enter a name for the database, for example, **Second_Lab** and click **OK**. (Screenshot 3)

Screenshot 3



- d. Enter the following fields (for example, your name, in the administrator field, and type the word **unis** in the database field) in your database and click **OK**. (Screenshot 4)

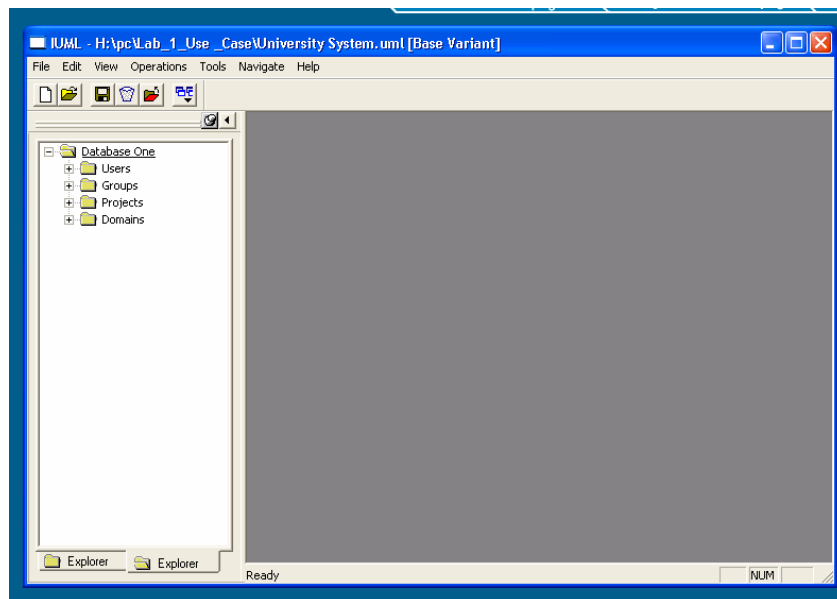
Screenshot 4



You have now created a database in your home directory.

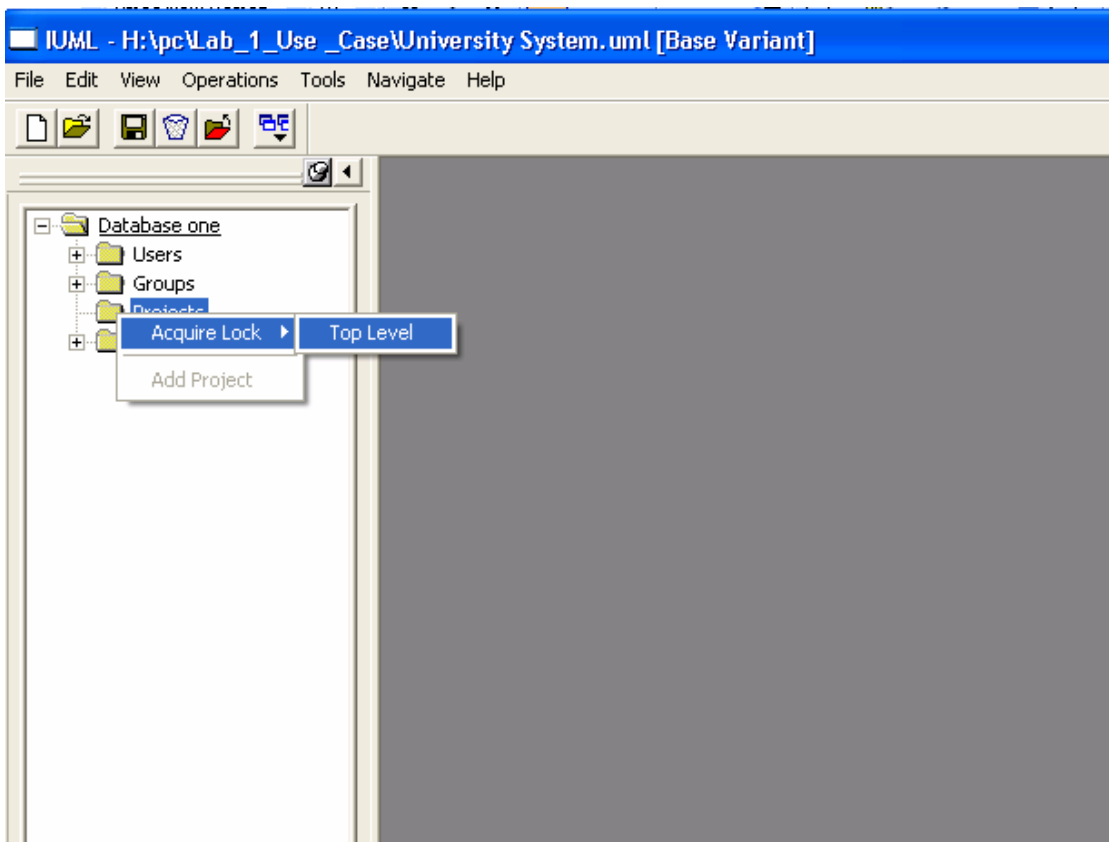
- e. The following window will appear (Screenshot 5)

Screenshot 5

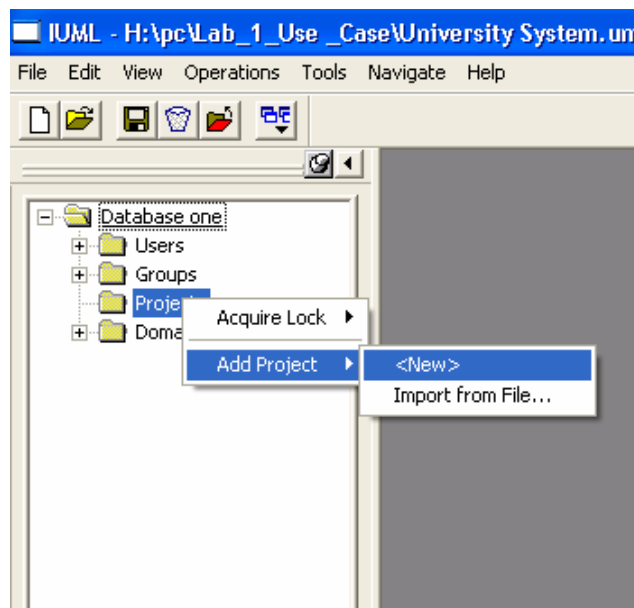


2. Create a Project

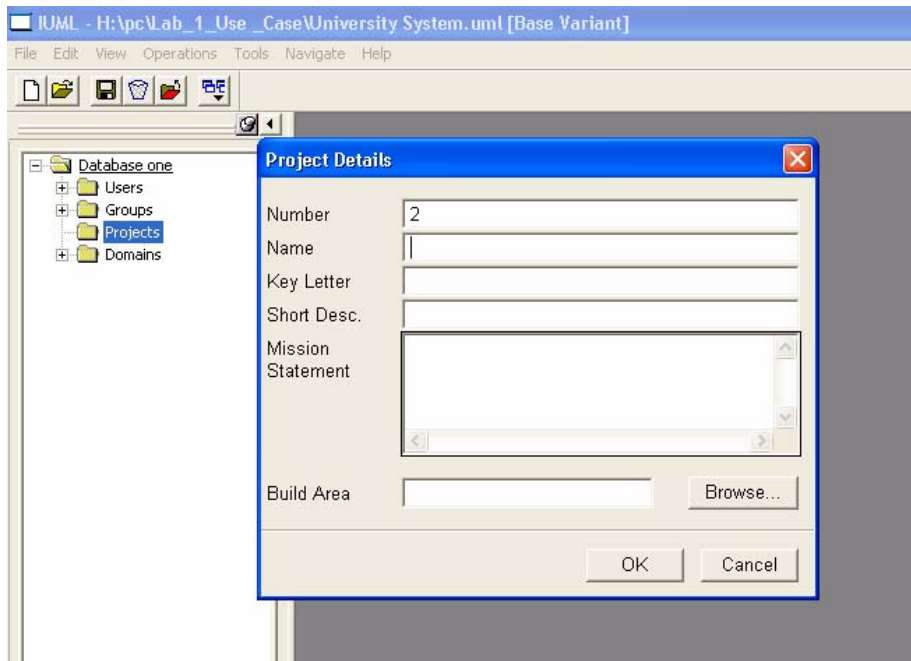
- Right click on **Projects** → **Acquire Lock** → **Top Level**



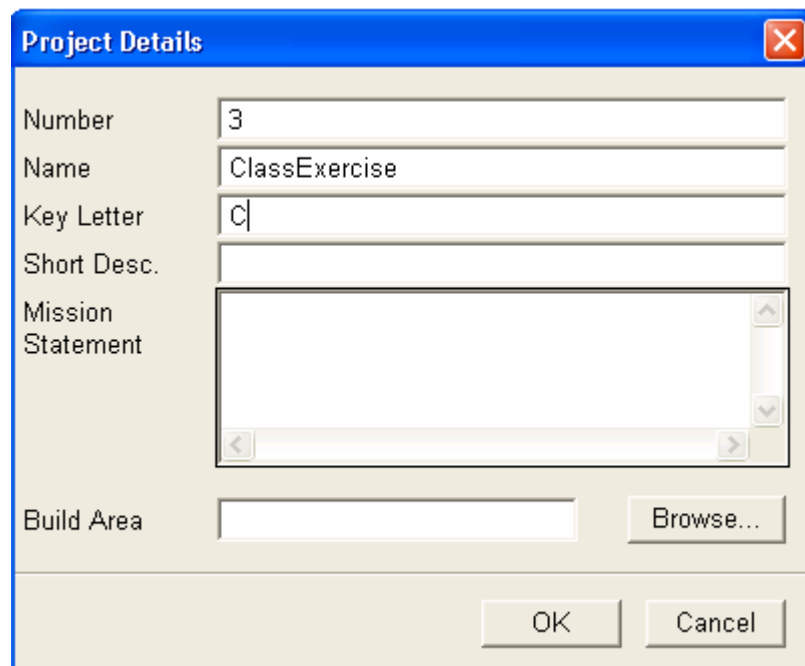
- Right click on **Projects** → **Add Project** → **Select <New>**



- The following window will appear



- Fill in the details of the project and click **OK**.
- Enter **ClassExercise** in the **Name** field, and enter any letter in the **Key Letter** field.

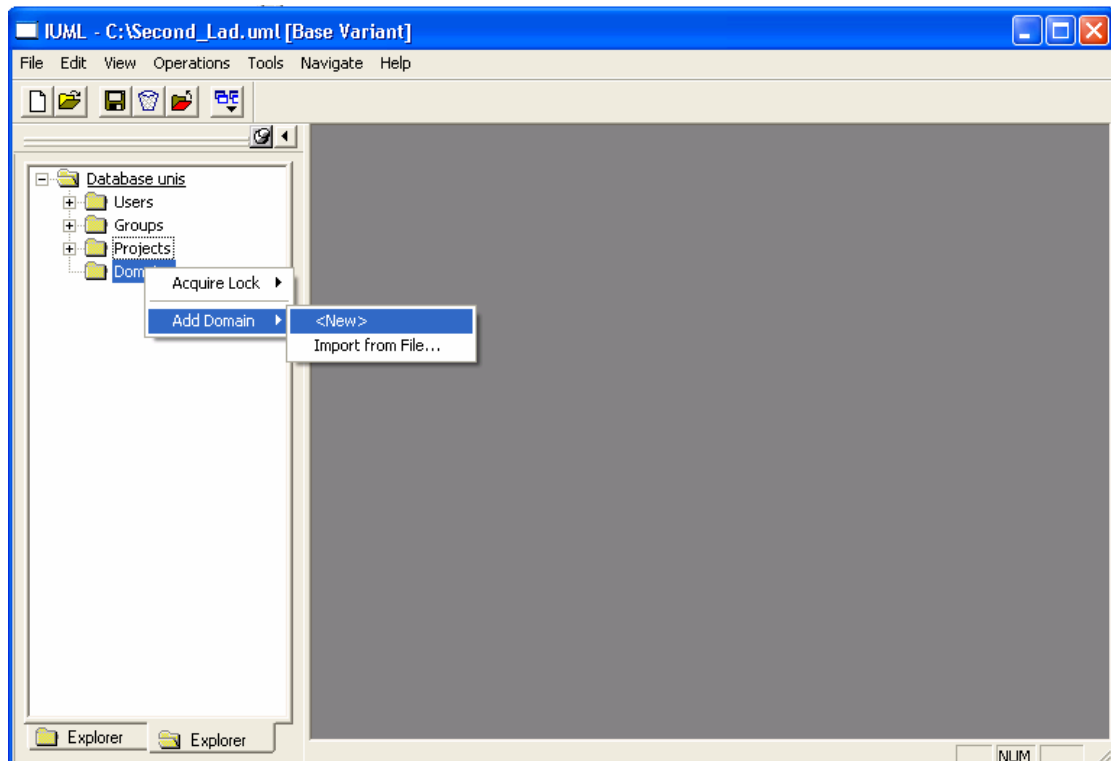


Leave the **Build Area** field blank for now.

So far you've learned how to **create a project** using iUMLite. Next you will learn how to create a class diagram.

3. Create a Class Diagram

Right click on **Domains** select **Add Domain - <New>**



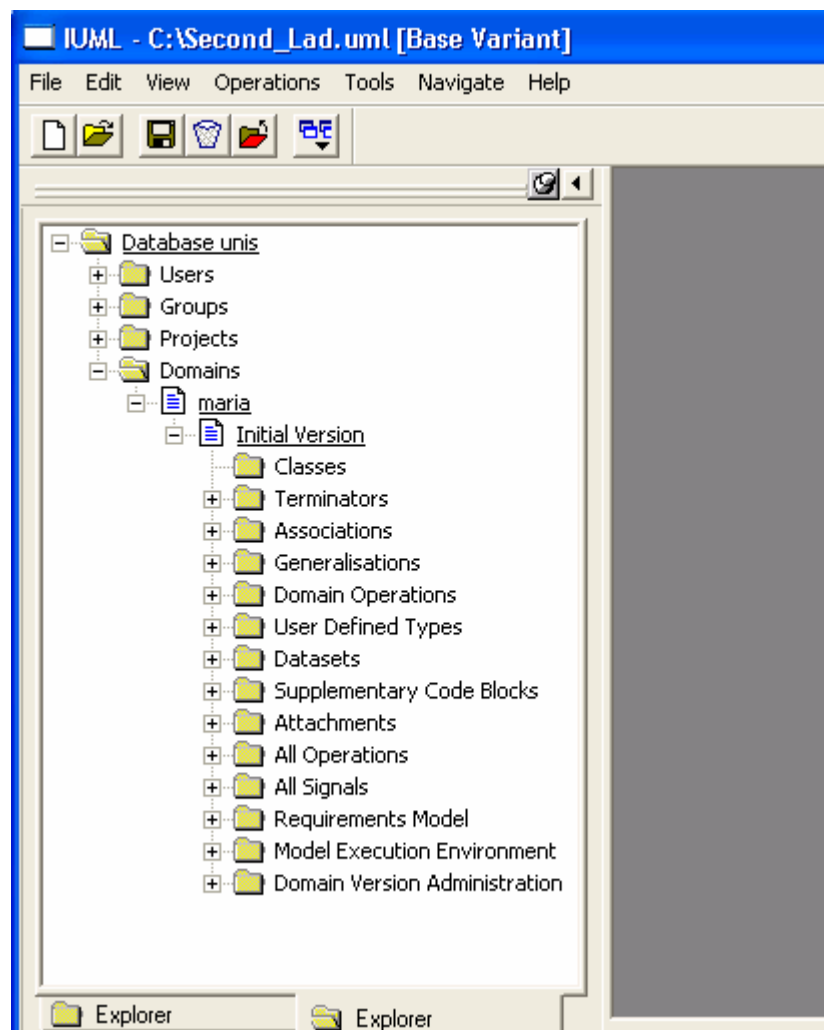
- Enter the following fields (for example, **your name**, in the name field and any letter in the **key Letter** field).
- Select **OK**.

The "Domain Details" dialog box is shown with the following fields and options:

- Number:** 3
- Name:** |
- Key Letter:** |
- Short Desc.:** |
- Mission Statement:** (text area)
- Build Area:** | (with a "Browse..." button)
- Type:** Undefined, Application, Service, Architecture, Implementation
- Initial Version:** Standard, Package

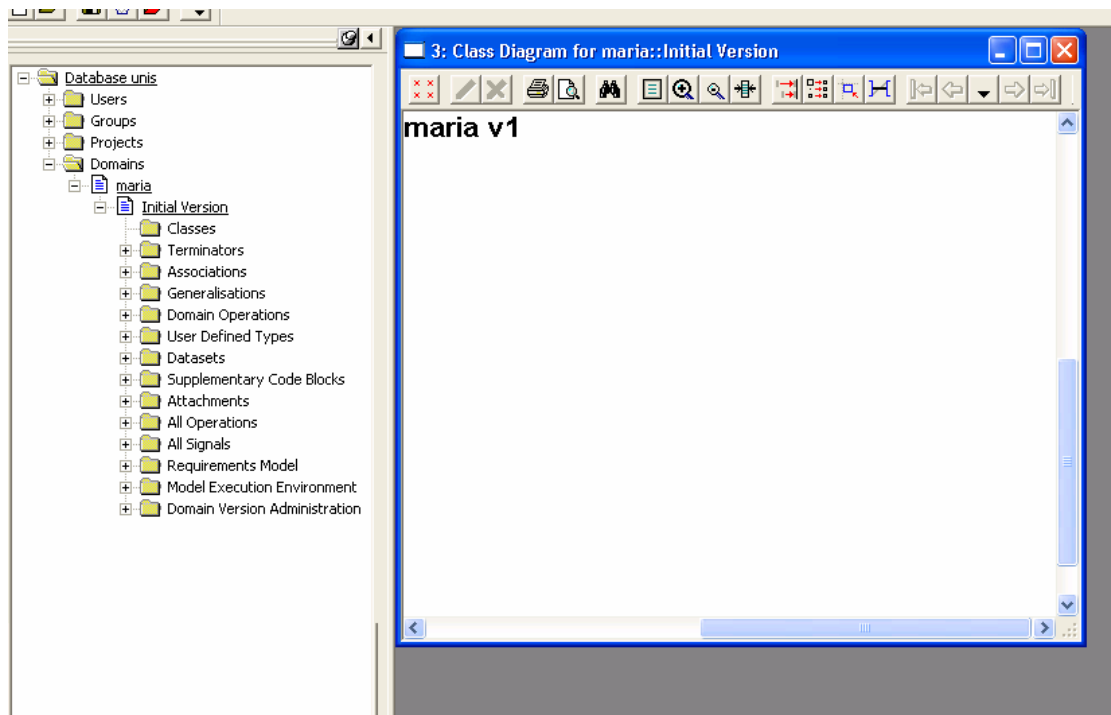
Buttons for "OK" and "Cancel" are at the bottom right.

Expand the tree to **Domains** → **name** → **Initial Version**



Click on **Initial Version**.

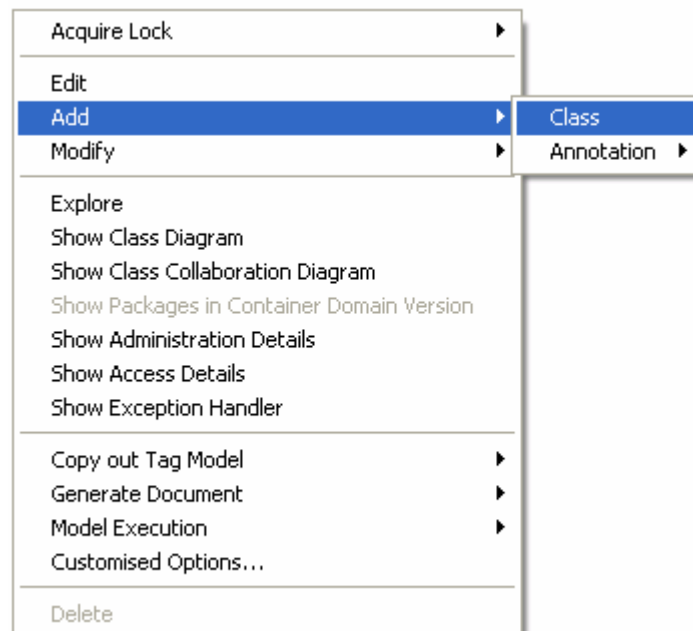
On the right hand side of the screen the Class Diagram, which is initially blank, will appear.



An example of adding a Class

Right click on the canvas → **Add** → **Class**.

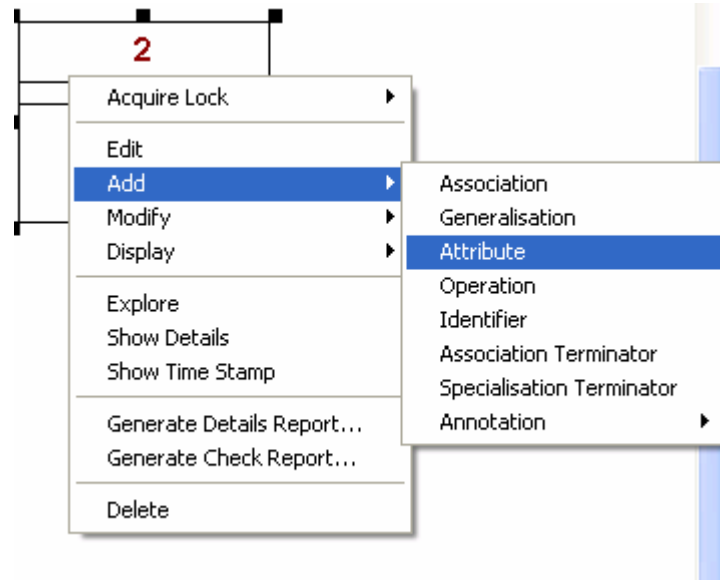
This can be seen in the following screenshot



An example of adding an Attribute

Right click on a class → **Add** → **Attribute**

This can be seen in the following screenshot

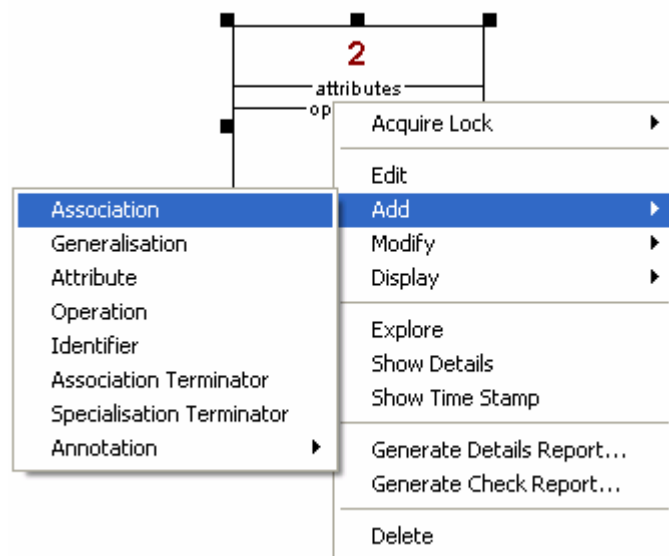


You can add an **Operation** and a **Generalisation** in a similar way.

An example of adding an Association

Right click on a class → **Add** → **Association**

This can be seen in the following screenshot



The following screenshot will appear

Association Details

Association Number
1

Class A
2 Unconditionally

Class B
1 One

Class B
1 Unconditionally

Class A
2 One

Type
 Referential
 Derived

Formalised In
 Class A
 Class B
 Associative

A Identifier
P
Select...

B Identifier
P
Select...

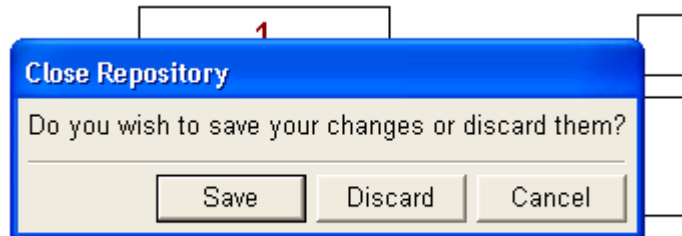
OK Cancel Select Parent...

Identify the type of the association and select **OK**.

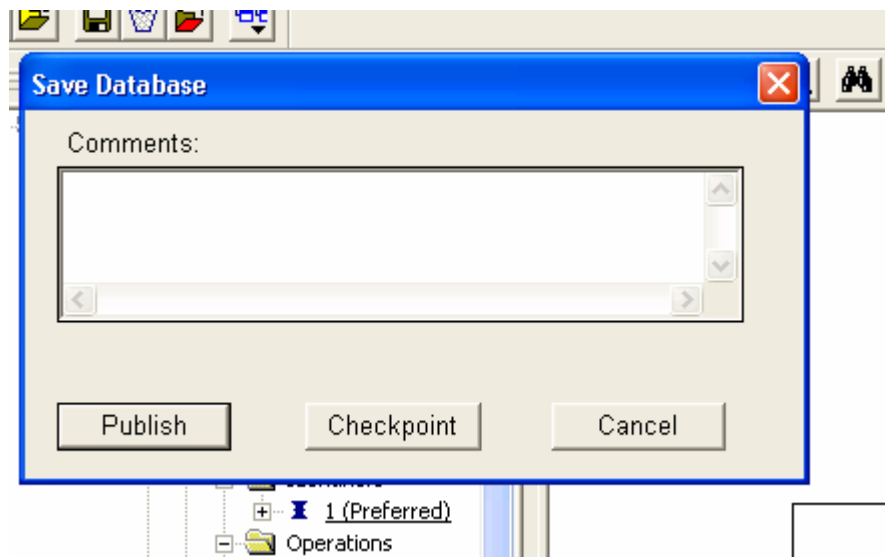
4. Save your work

From the main menu select **File** → **Exit**.

The following window will appear.



Select **save**. The following window will appear.



You can enter a comment and click **Publish**

In the next window that appears, confirm your exit from iUMLite by clicking **OK**.